

## RTD-15.2 Full height rotor turnstile for indoor and outdoor operation



operating  
voltage



power  
consumption



passage  
directions



persons/min



temperature  
range



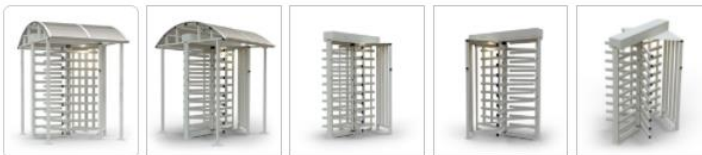
IP Code



mechanical  
unlocking



"gateway" mode



The full height rotor turnstile RTD-15 offers a combination of complete closure of passageway, modern design and high throughput performance.

- two flush mounted 24V/50W halogen lamps located on the top channel as standard
- anti-backup device to prevent reverse rotation once the rotor has turned more than 60°
- "Fire Alarm" input to unblock the turnstile from fire alarm system or emergency button
- "Lock-chamber" access operation for additional visual verification



#### Delivery set

- turnstile with internal electronics
- guide barrier set
- remote-control panel

#### Design

- for outdoor and indoor operation
- 120° rotor position
- two LED direction indicators
- flush set walkway downlights

This range of rotor full height turnstiles is intended for both indoor and outdoor use. The housing enables turnstile operation at ambient air temperature from -40°C to +55°C.

The robust welded aluminium structure of the turnstile offers utmost reliability and vandal resistance, and ensures the turnstile stable operation even in harsh environment for many years.

The fine structured powder coating with mica iron-effect provides superior corrosion protection, effective electric insulation and improved impact resistance.

The turnstile is provided with bright built-in LED indicators to show if access is granted or denied. Optionally the remote light indicators can be connected.

The RTD-15 can be operated from the remote control panel included in a standard delivery set or a wireless remote control (optionally) and can be easily integrated into most access control systems. The operating modes are set up independently for each passage direction.

Two built-in mechanical release locks, one for each passage direction, allow unlocking the turnstile with a key for free passage in case of power failure or necessity to override an access control system ACS.

When operating under an access control system (ACS), the turnstile can support pulse and potential control modes. The turnstile outputs have galvanic isolation. The logic board is protected against short circuit, overload and polarity inversion.

Due to low power consumption, the turnstile comes with safe voltage – 24V max.

Available in the same material and colour as the RTD-15 turnstiles, full height MB-15 railings and WHD-15 security gates will help to form a passageway of any required configuration and make the entrance design complete.

For protection against downfalls and climbing over, the turnstile may be supplied with a protective canopy to be joined into a single portal structure with the turnstile.

A number of RTD-15 turnstiles with canopies can be mounted in one row. Special couplings have been designed to provide reliable joining of two or more canopies. This design also allows cable laying through all the top channels of the lined turnstiles, which makes the installation considerably easier.

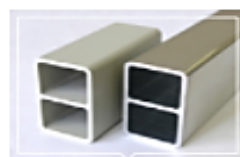
By means of an extra foundation frame RF01, the turnstile can even be installed on an unstable ground.



LED indicator of way direction



Control panel for remote management



PERCo full height turnstiles - aluminium profiles



Turnstile mechanical unlocking



Walkway lighting in the ceiling



Special protecting apron for full height turnstile



Operating voltage	22-30 V DC
Power consumption	105 W
Consumption current	4.5 A
Number of passage directions	2
Throughput rate (in the single passage mode)	20 persons/min
Throughput rate (in the free passage mode)	30 persons/min
Dimensions (length×width×height)	1600×1800×2325 mm
Passageway width	755 mm
Operating temperature range	from -40 °C to +55 °C
IP Code	IP54



sandpaper powder coating with pearl mica effect; light beige colour

Sandpaper powder coating with pearl mica effect; light beige colour.

Corrosion protected powder coated aluminium frame.

The warranty period is 5 (five) years from the date of sale of the product.



Winery, New Zealand



The ARNEG's plant of refrigeration systems. Padua, Italy







# REVROY

Solutions For Controlled Access

## CONTACT

Ravi@revroy.com | Info@revroy.Com

+91 080 41302021, +91 080 41571225, +91 9840294082

### SALES OFFICE

No.#13, Hamdh Court Building,  
Mother Teresa Road, Austin Town,  
Bangalore-560 047, India

### FACTORY

Plot No 143-B, Bommasandra Industrial Area  
Bangalore-560099, Karnataka. India.  
+91 80 41658921

“Finest from the very best from around the world”



[www.revroy.com](http://www.revroy.com)